

ROBORIGGER AR5

The TENSA ROBORIGGER products (patent pending) are designed to allow the dangerous operations of orienting and landing lifted loads to be undertaken without the need for people to be in the vicinity of the load.

Not only is it safer, but by eliminating the need for an extra person to orient and release the load, it offers significant cost savings that will pay back in under 1 year.

The ROBORIGGER Autorotater AR rotating system uses inertial and gyroscopic forces to rotate the load. It is controlled wirelessly using a handheld remote. ROBORIGGER can store 2 headings and automatically rotate the load to either heading using its control system, which has an inbuilt compass and gyroscope. Roborigger will maintain the heading of the load regardless of wind.

The ROBORIGGER Wireless Release WR system allows the operator to release the load remotely by wireless. The system has inbuilt safeguards to prevent release under load and has a dual command system using separate buttons to initiate a release.



KEY FEATURES:

- Robust and reliable design.
- Wireless remote control with 100m min range.
- Status indicating lights to indicate when the unit is in autorotate mode and healthy/fault status.
- Ability to have 2 preset orientations to simplify repetitive operations.
- Battery operated with capability to last at least 12 hours
- Integrated load measurement.
- Minimal operator training required.
- Remote release of hooks with failsafe protection.
- Online monitoring and diagnosis

SPECIFICATIONS:

- WLL:** 5000kg
- Size:** 1200mm (diam) x 900mm(H)
- Weight:** 500kg

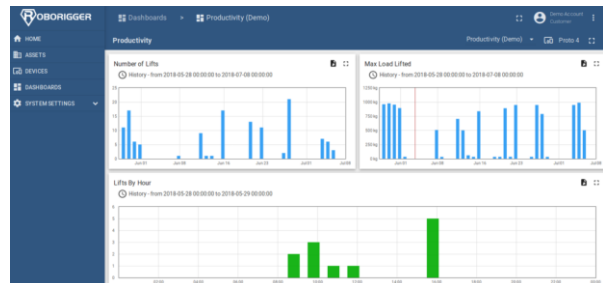


Figure 1- Online monitoring of all lifts and Roborigger performance and productivity

ROBO_ar5 v5